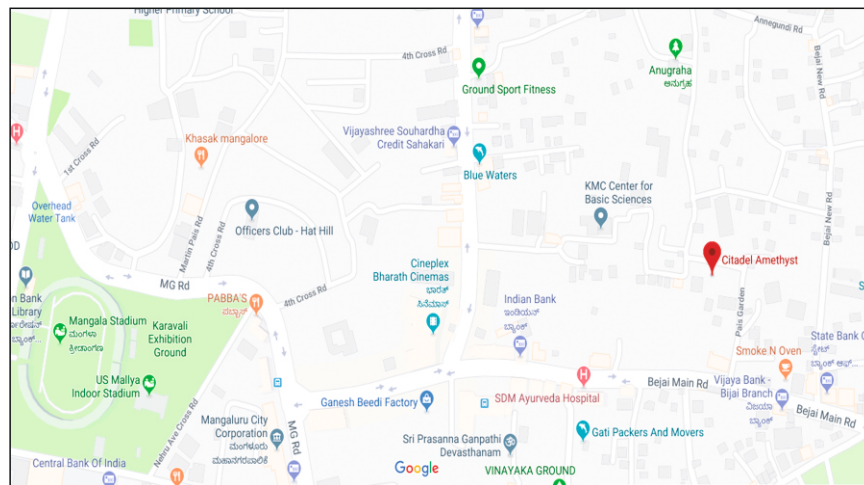




Location Map



RERA No: PRM/ KA/ RERA/ 1257/ 334/ PR/ 180420/ 001505

Website: <https://rera.karnataka.gov.in/home>



003, Sapphire Apartment, Bejai Church Road, Bejai,
Mangalore-575 004. India
Contact: +91-824-2223382 / +91-9945271784

Not just a Home.....

...A Community

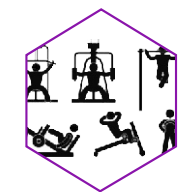


With the advent of fast pace life and need for privacy, we have lost connectivity between people. We have become dependent on technology for communication and connectivity. Citadel brings to you a new age Community concept based on the adage - Love thy Neighbour, as thyself.

With 8 spacious apartments and ample corridor connecting spaces in each floor, it is a promise of space both indoors and outdoors. Located in a fast developing neighbourhood of Bejai, Mangalore, it provides the best connectivity to markets, hospitals, schools, railway station, airport, etc.



Intercom Facility



Outdoor Garden Gym



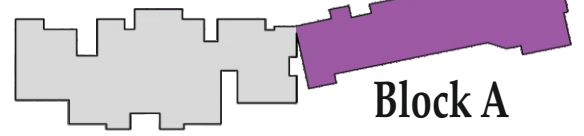
Reticulated Gas Connection



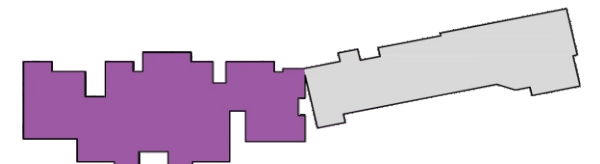
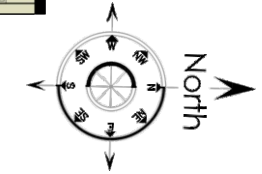
Children's Play Area



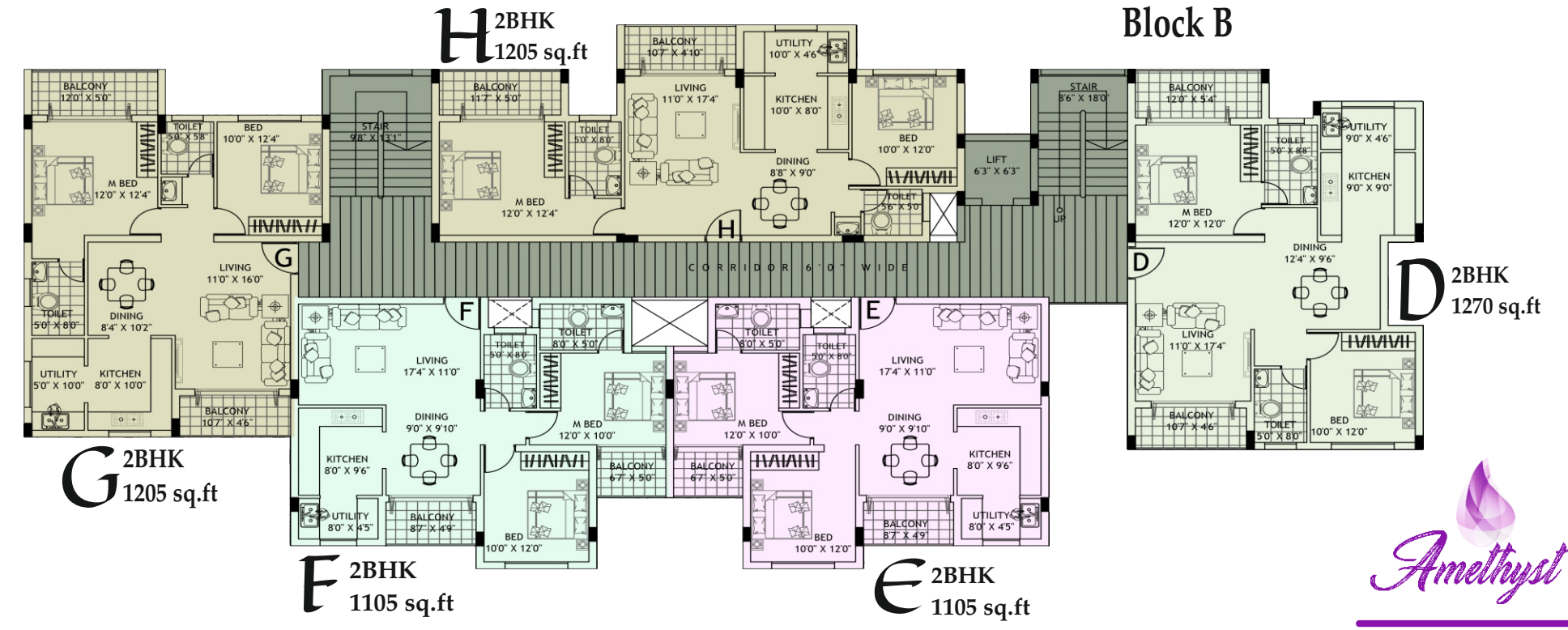
Well Water for Back-up



Block A



Block B



Specifications

- 2 Nos - 8 Passenger capacity elevator
- Attractive melamine polished decorative main entrance door
- Hardwood door frames with flush doors for all internal rooms
- Powder coated sliding aluminium / UPVC windows
- Apartment flooring with vitrified tiles
- Granite platform with stainless steel sink in kitchen
- White coloured sanitary ware in all Toilets
- Good Quality C.P plumbing fixtures of approved make
- Putty finished ceiling and internal walls with premier emulsion. Double plastered with Anti-fungal emulsion for External walls
- Modular electrical switches with standard copper wires of approved make
- 4KW power provided for each apartment with single phase meter
- Overhead water tank and sump tanks of required capacity



Website:
www.citadeldevelopers.com

Contact:
+91 824 2223382 / +91 99452 71784 / +91 99453 45384 / +91 98450 81469




Amethyst

Bejai, Mangalore